

## Lovely Arcadia Home on Large 13,000+/- Lot!



\$ 1,498,000



2541 Louise Ave., Arcadia, CA 91006

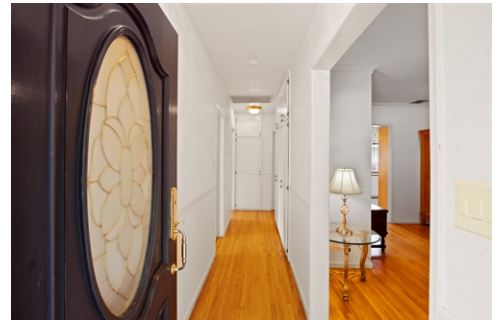
- » Beds: 3 | Baths: 2 Full
- » MLS #: P1-15179
- » Single Family | 1,966 ft<sup>2</sup> | Lot: 12,934 ft<sup>2</sup>
- » Located in the desirable Arcadia School District on a quiet street.
- » An oversized backyard is perfect for a possible ADU with its own separate yard or a wonderful garden!
- » More Info: 2541Louise.com



**Reni Rose**  
(626) 437-6000 (Cell)  
(626) 353-6795 (Assistant, Lauri)  
renirose@aol.com  
<http://www.renirose.com>

  
**BERKSHIRE  
HATHAWAY**  
HomeServices  
**California Properties**

Berkshire Hathaway HomeServices  
115 W. Sierra Madre Blvd.  
Sierra Madre, CA 91024  
(626) 355-8400



Located in the desirable Arcadia School District, this lovely traditional home is situated on a large lot of nearly 13,000 square feet. It boasts an open floor plan and features beautiful wood flooring and brand-new carpet. There is a cozy brick fireplace in the family room which offers views of and opens to a patio and the beautiful backyard. There is a spacious dining room with built-in cabinets and shelving for displaying family treasures. The primary bedroom suite is nicely located at the back of the home and offers wall-to-wall closets. The well-appointed kitchen with breakfast area was updated about 15 years ago and makes meal prep a breeze. Enjoy intimate dinners with family on the lattice covered patio or entertain on a grand scale in the sprawling and lushly landscaped backyard which is large enough for

